

# LLRF R&D TOWARDS CW OPERATION OF THE EUROPEAN XFEL

A. Bellandi\*, V. Ayvazyan, J. Branlard, C. Gümüs, S. Pfeiffer, K. Przygoda, R. Rybaniec, H. Schlarb, C. Schmidt, J. Sekutowicz, DESY, Hamburg, 22607 Hamburg, Germany  
W. Cichalewski, TUL-DMCS, Łódź, Poland

## Abstract

The ever growing request for machines with a higher average beam pulse rate and also with a relaxed ( $< 1$  MHz) pulse separation calls for superconducting linacs that operate in Long Pulse (LP) or Continuous Wave (CW) mode. For this purpose the European X-ray Free Electron Laser (European XFEL) could be upgraded to add the ability to run in CW/LP mode. Cryo Module Test Bench (CMTB) is a facility used to perform tests on superconducting cavity cryomodules. Because of the interest [1] in upgrading European XFEL to a CW machine, CMTB is now used to perform studies on XM-3 [2], a 1.3 GHz European XFEL-like cryomodule with modified coupling that is able to run with very high quality factor ( $Q_L = 10^7 \dots 10^8$ ) values. The RF power source allows running the cavities at gradients larger than 16 MV/m. Because of the  $Q_L$  and gradient values involved in these tests, detuning effects like mechanical resonances and microphonics became more challenging to regulate. The goal is then to determine the appropriate set of parameters for the LLRF control system to keep the error to be less than  $0.01^\circ$  in phase and  $0.01\%$  in amplitude.

## A POSSIBLE CW UPGRADE AT EUROPEAN XFEL

XFELs are important tools of discovery that allow unprecedented brightness and spectral purity. In 2017 the European XFEL came into operation, producing the brightest and hardest X-ray FEL light in the world. At the moment European XFEL can produce a maximum of 2700 pulses with a temporal distance of 220 ns and a repetition rate of 10 Hz. Because of the advantage (from the experimental point of view) of having a bigger temporal separation between the pulses and simultaneously increasing the average number of pulses per seconds, a CW upgrade of European XFEL could be made. For such upgrade the duty cycle would change from the actual value of 1.4% at 17.5 GeV for Short Pulse (SP) to a maximum value of 100% at 8.6 GeV, for CW, or 10% to 50% at 12.8 GeV for LP [1]. For CW/LP operations, IOT amplifiers, along with the existing klystrons, will be installed in European XFEL tunnel to allow both SP (high gradient) and CW/LP (reduced gradient) with minimum downtime between the switch of the two modes. To limit the required RF power, the  $Q_L$  could be increased to values higher than  $10^7$ . To meet the field quality requirements inside the cavities with an increased  $Q_L$  and to decide the optimal set of parameters of the Low Level RF (LLRF) controller, further studies have to be done both on European XFEL and dedicated test facilities.

\* andrea.bellandi@desy.de

## CHALLENGES OF CW OPERATION

Increasing the  $Q_L$  from the current European XFEL value of  $4.6 \cdot 10^6$  to values bigger than  $10^7$  results in a full bandwidth less than 100 Hz that will make the cavities more susceptible to detuning effects. In order to keep the cavities on resonance with the required field stability but, at the same time, to limit the required peak RF power, these effects must be canceled out using a LLRF control system that acts on the fast piezoelectric tuners.

### Lorentz Force Detuning

Lorentz force detuning effects on a TESLA cavity  
 $Q_L = 6.1$ ,  $K_{lfd} = -1.59 \text{ Hz}/(\text{MV})^2$  and  $\frac{R}{Q} = 1038$   
Measured vs computed

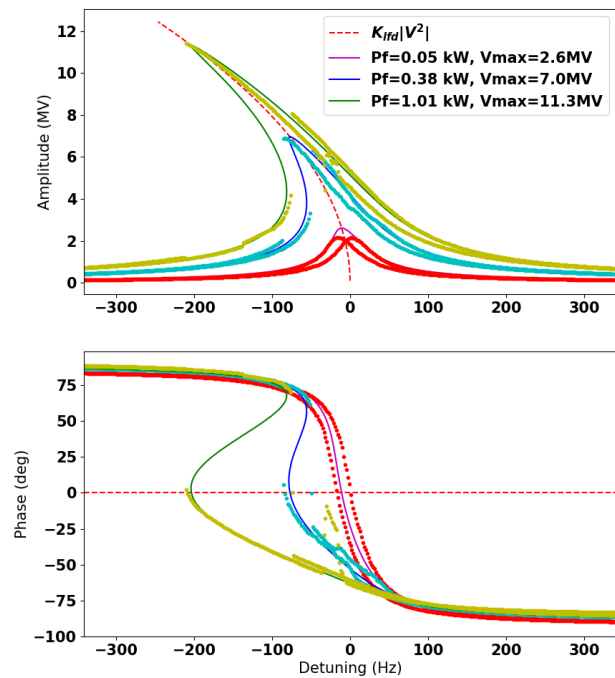


Figure 1: Resonance scan of a TESLA-like superconducting cavity at different values of the forward power using piezoelectric actuators. Computed (lines) vs. measured (points) values are shown. Tests were taken on cavity 2 of XM-3 module.

Lorentz Force Detuning (LFD) is a detuning effect that arises from the electromagnetic pressure that the accelerating field exerts on cavity walls. The detuning produced by LFD is proportional to the square value of the field.

$$\Delta f_{lfd} = K_{lfd} \cdot (\Delta V)^2$$



Measurements on microphonics and on the fast tuner transfer function with CW fields were made on XM-3. Noise measurements were done recording the spectrum of the RF signal in open loop. Results are displayed in Fig. 4 for different gradients. As it was already found in previous measurements [5], the two main noise components are at 30 Hz and 49 Hz and are produced by the vacuum pumps installed in the facility.

Transfer function between fast tuners and detuning.  
 $Q_L=3E7$ ,  $E_{acc}=2MV$

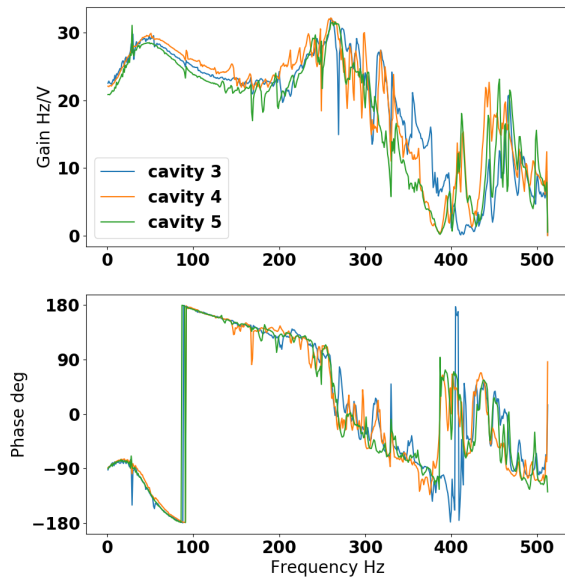


Figure 5: Mechanical transfer function between piezoelectric actuators of cavity 3,4,5 XM-3 and probe signals. The Y axis is the amount of detuning produced by a sinusoidal excitation from the piezoelectric actuators.

The mechanical transfer function between the fast tuners and the accelerating field was also measured (Fig. 5) using the piezoelectric actuators excited with a varying frequency sinusoidal signal. A central component of 260 Hz matches the measurement at European XFEL, whereas the 390 Hz component was not found.

To observe the long time stability of the microphonics, a 24 hours-long test acquisition of piezoelectric sensor signal (Fig. 6) was recorded. The spectrogram shows the stability of the microphonic spectrum over the entire measurement time.

## CONCLUSION AND OUTLOOK

Previously done measurements [6, 7] demonstrated that it is possible to achieve high CW RF fields ( $>15$  MV/m) while meeting the required stability (less than  $0.01^\circ$  in phase and  $0.01\%$  in amplitude). However a simple, automatic and reproducible way to achieve these results has to be developed. Furthermore the knowledge acquired at CMTB has to be adapted to large scale working facilities like European XFEL. Then some additional development should be done:

Technology  
Low level RF

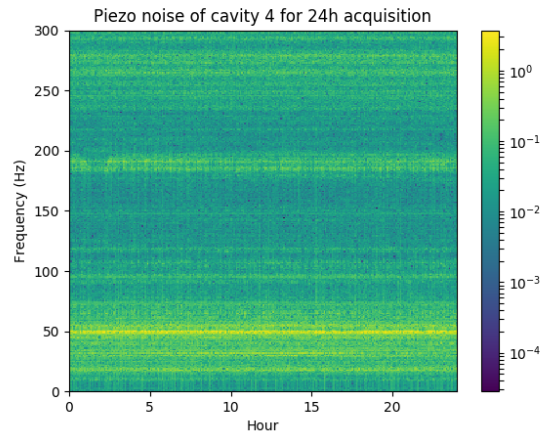


Figure 6: Noise spectrogram taken during a 24h data recording. The signal is recorded from a piezoelectric sensor.

- Develop a reliable detuning estimation.
- Simulate how beam loading affects the system.
- Estimate an RF plant model of a module driven by an IOT. Optimize the MIMO feedback controller parameters with the model.
- Develop algorithms that counteracts LFD related issues. A simple and reproducible way to achieve these results has to be found.
- Find a way to optimally and automatically setup ANC.
- Develop diagnostic routines to find out important information ( $Q_L$ , detuning, quench detection, etc.) about the system while minimizing the downtime.
- Find automated procedures to automatically raise CW gradient to a desired level while meeting European XFEL specifications. This should be proven with multiple long term studies.
- Update hardware/firmware/software stack to industrial quality level. The increased performance possibilities of new hardware has to be exploited to improve the LLRF system regulation ability.

The measurements done at European XFEL and CMTB will then be used to enhance the model used in our LLRF control system.

## REFERENCES

- [1] J. Sekutowicz *et al.*, "Feasibility of CW and LP Operation of the XFEL Linac", in *Proc. FEL'13*, New York, USA, Aug. 2013, paper TUOCNO04, pp. 189–192.
- [2] J. Branlard *et al.*, "Highlights of the XM-3 Cryomodule Tests at DESY", presented at the 29th Linear Accelerator Conf. (LINAC'18), Shanghai, China, Sep. 2018, paper TUPO029, this conference.

- Content from this work may be used under the terms of the CC BY 3.0 licence (© 2018). Any distribution of this work must maintain attribution to the author(s), title of the work, publisher, and DOI.
- [3] V. Ayvazyan and S. Simrock, “Dynamic Lorentz force detuning studies in Tesla cavities”, in *Proc. EPAC’04*, Lucerne, Switzerland, Jul. 2004, paper TUPKF016, pp 994–996.
- [4] J. R. Delayen, “Ponderomotive instabilities and microphonics - a tutorial”, in *Proc. 12th Int. Workshop on RF Superconductivity (SRF’05)*, Ithaca, NY, USA, Jul. 2005, *Physica C: Superconductivity*, vol. 441, no. 1–2, pp. 1–6, 2006. <https://doi.org/10.1016/j.physc.2006.03.050>
- [5] R. Rybaniec *et al.*, *IEEE Transactions on Nuclear Science*, vol. 64, no. 6, pp. 1382–1388, 2017. <https://doi.org/10.1109/TNS.2017.2687981>
- [6] W. Cichalewski *et al.*, “High loaded quality factor superconducting cavities accelerating field parameters regulation during continuous wave operation”, *IEEE Transactions on Nuclear Science*, to be published.
- [7] K. Przygoda *et al.*, “MicroTCA. 4 based Single Cavity Regulation including Piezo Controls”, in *Proc. IPAC’16*, Busan, Korea, May 2016, pp. 3152–3154. <https://doi.org/10.18429/JACoW-IPAC2016-TH0AA03>