

RARE DECAY $\pi^0 \rightarrow E^+ E^-$ AS A TEST OF STANDARD MODEL

A.E. Dorokhov^a

Joint Institute for Nuclear Research, Bogoliubov Laboratory of Theoretical Physics
 114980, Moscow region, Dubna, Russia

Experimental and theoretical progress concerning the rare decay $\pi^0 \rightarrow e^+ e^-$ is briefly reviewed. It includes the latest data from KTeV and a new model independent estimate of the decay branching which show the deviation between experiment and theory at the level of 3.3σ . The predictions for η and η' decays into lepton pair are presented. We also comment on the impact on the pion rare decay estimate of the data of BABAR collaboration on the pion transition form factor at large momentum transfer.

1 Introduction

Astrophysics observables tell us that 95% of the matter in the Universe is not described in terms of the Standard Model (SM) matter. Thus, the search for the traces of New Physics is a fundamental problem of particle physics. There are two strategies to look for the effects of New Physics: experiments at high energy and experiments at low energy. In high-energy experiments it is considered that due to a huge amount of energy the heavy degrees of freedom presumably characteristic of the SM extension sector are possible to excite. In low-energy experiments it is huge statistics that compensates the lack of energy by measuring the rare processes characteristic of such extensions. At present, there is no any evidence for deviation of SM predictions from the results of high-energy experiments and we are waiting for the LHC epoch. On the other hand, in low-energy experiments there are rough edges indicating such deviations. The most famous example is the muon ($g-2$). Below it will be shown that due to recent experimental and theoretical progress the rare process $\pi^0 \rightarrow e^+ e^-$ became a good SM test process and that at the moment there is a discrepancy between the SM prediction and experiment at the level of 3.3σ deviation.

2 KTeV data

In 2007, the KTeV collaboration published the result [1] for the branching ratio of the pion decay into an electron-positron pair

$$B_{\text{no-rad}}^{\text{KTeV}}(\pi^0 \rightarrow e^+ e^-) = (7.48 \pm 0.38) \cdot 10^{-8}. \quad (1)$$

The result is based on observation of 794 candidate $\pi^0 \rightarrow e^+ e^-$ events using $K_L \rightarrow 3\pi^0$ as a source of tagged π^0 s. Due to a complicated chain of the process and a good technique for final state resolution used by KTeV this is a process with low background.

3 Classical theory of $\pi^0 \rightarrow e^+ e^-$ decay

The rare decay $\pi^0 \rightarrow e^+ e^-$ has been studied theoretically over the years, starting with the first prediction of the rate by Drell [2]. Since no spinless current coupling of quarks to leptons exists, the decay is described in the lowest order of QED as a one-loop process via the two-photon intermediate state, as shown in Fig. 1. A factor of $2(m_e/m_\pi)^2$ corresponding to the approximate helicity conservation of the interaction and two orders of α suppress the decay with respect to the $\pi^0 \rightarrow \gamma\gamma$ decay, leading to an expected branching ratio of about 10^{-7} . In the Standard Model contributions from the weak interaction to this process are many orders of magnitude smaller and can be neglected.

To the lowest order in QED the normalized branching ratio is given by

$$R(\pi^0 \rightarrow e^+ e^-) = \frac{B(\pi^0 \rightarrow e^+ e^-)}{B(\pi^0 \rightarrow \gamma\gamma)} = 2 \left(\frac{\alpha m_e}{\pi m_\pi} \right)^2 \beta_e(m_\pi^2) |\mathcal{A}(m_\pi^2)|^2, \quad (2)$$

where $\beta_e(q^2) = \sqrt{1 - 4\frac{m_e^2}{q^2}}$, $B(\pi^0 \rightarrow \gamma\gamma) = 0.988$. The amplitude \mathcal{A} can be written as

e-mail: ^adorokhov@theor.jinr.ru, This is an extended version of the talk.

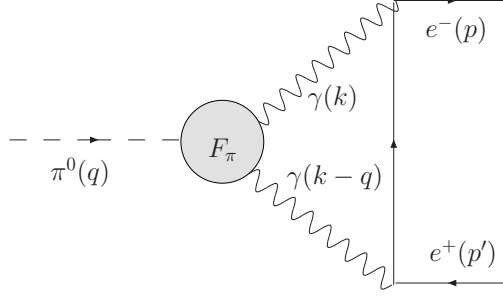


Figure 1. Triangle diagram for the $\pi^0 \rightarrow e^+e^-$ process with a pion $\pi^0 \rightarrow \gamma^*\gamma^*$ form factor in the vertex.

$$\mathcal{A}(q^2) = \frac{2i}{q^2} \int \frac{d^4k}{\pi^2} F_{\pi\gamma^*\gamma^*}(k^2, (k-q)^2) \frac{q^2 k^2 - (qk)^2}{(k^2 + i\varepsilon) \left((k-q)^2 + i\varepsilon \right) \left((k-p)^2 - m_e^2 + i\varepsilon \right)}, \quad (3)$$

$$(4)$$

where $q^2 = m_\pi^2, p^2 = m_e^2$. $F_{\pi\gamma^*\gamma^*}$ is the form factor of the transition $\pi^0 \rightarrow \gamma^*\gamma^*$ with off-shell photons.

The imaginary part of \mathcal{A} is defined uniquely as

$$\text{Im}\mathcal{A}(q^2) = \frac{\pi}{2\beta_e(q^2)} \ln(y_e(q^2)), \quad (5)$$

$$y_e(q^2) = \frac{1 - \beta_e(q^2)}{1 + \beta_e(q^2)}.$$

It comes from the contribution of real photons in the intermediate state and is model independent since $F_{\pi\gamma^*\gamma^*}(0,0) = 1$. Using inequality $|\mathcal{A}|^2 \geq (\text{Im}\mathcal{A})^2$ one can get the well-known unitary bound for the branching ratio [3]

$$B(\pi^0 \rightarrow e^+e^-) \geq B^{\text{unitary}}(\pi^0 \rightarrow e^+e^-) = 4.69 \cdot 10^{-8}. \quad (6)$$

One can attempt to reconstruct the full amplitude by using a once-subtracted dispersion relation [5]

$$\mathcal{A}(q^2) = \mathcal{A}(q^2 = 0) + \frac{q^2}{\pi} \int_0^\infty ds \frac{\text{Im}\mathcal{A}(s)}{s(s-q^2)}. \quad (7)$$

If one assumes that Eq. (5) is valid for any q^2 , then one arrives for $q^2 \geq 4m_e^2$ at [6, 7, 8]

$$\text{Re}\mathcal{A}(q^2) = \mathcal{A}(q^2 = 0) + \frac{1}{\beta_e(q^2)} \left[\frac{1}{4} \ln^2(y_e(q^2)) + \frac{\pi^2}{12} + \text{Li}_2(-y_e(q^2)) \right], \quad (8)$$

where $\text{Li}_2(z) = -\int_0^z (dt/t) \ln(1-t)$ is the dilogarithm function. The second term in Eq. (8) takes into account a strong q^2 dependence of the amplitude around the point $q^2 = 0$ occurring due to the branch cut coming from the two-photon intermediate state. In the leading order in $(m_e/m_\pi)^2$, Eq. (8) reduces to

$$\text{Re}\mathcal{A}(m_\pi^2) = \mathcal{A}(q^2 = 0) + \ln^2\left(\frac{m_e}{m_\pi}\right) + \frac{\pi^2}{12}. \quad (9)$$

Thus, the amplitude is fully reconstructed up to a subtraction constant. Usually, this constant containing the nontrivial dynamics of the process is calculated within different models describing the form factor $F_\pi(k^2, q^2)$ [4, 5, 7, 9, 10]. However, it has recently been shown in [10] that this constant may be expressed in terms of the inverse moment of the pion transition form factor given in symmetric kinematics of spacelike photons

$$\mathcal{A}(q^2 = 0) = 3 \ln\left(\frac{m_e}{\mu}\right) - \frac{5}{4} - \frac{3}{2} \left[\int_0^{\mu^2} dt \frac{F_{\pi\gamma^*\gamma^*}(t, t) - 1}{t} + \int_{\mu^2}^\infty dt \frac{F_{\pi\gamma^*\gamma^*}(t, t)}{t} \right]. \quad (10)$$

Here, μ is an arbitrary (factorization) scale. One has to note that the logarithmic dependence of the first term on μ is compensated by the scale dependence of the integrals in the brackets. In this way two independent processes becomes related.

4 Importance of CLEO data on $F_{\pi\gamma^*\gamma}$

In order to estimate the integral in Eq. (10), one needs to define the pion transition form factor in symmetric kinematics for spacelike photon momenta. Since it is unknown from the first principles, we will adapt the available experimental data to perform such estimates. Let us first use the fact that $F_{\pi\gamma^*\gamma^*}(t, t) < F_{\pi\gamma^*\gamma^*}(t, 0)$ for $t > 0$ in order to obtain the lower bound of the integral in Eq. (10). For this purpose, we take the experimental results from the CELLO [11] and CLEO [12] Collaborations for the pion transition form factor in asymmetric kinematics for spacelike photon momentum which is well parameterized by the monopole form [12]

$$F_{\pi\gamma^*\gamma^*}^{\text{CLEO}}(t, 0) = \frac{1}{1 + t/s_0^{\text{CLEO}}}, \quad (11)$$

$$s_0^{\text{CLEO}} = (776 \pm 22 \text{ MeV})^2.$$

For this type of the form factor one finds from Eq. (10) that

$$\mathcal{A}(q^2 = 0) > -\frac{3}{2} \ln\left(\frac{s_0^{\text{CLEO}}}{m_e^2}\right) - \frac{5}{4} = -23.2 \pm 0.1. \quad (12)$$

Thus, for the branching ratio we are able to establish the important lower bound which considerably improves the unitary bound given by Eq. (6)

$$B(\pi^0 \rightarrow e^+e^-) > B^{\text{CLEO}}(\pi^0 \rightarrow e^+e^-) = (5.84 \pm 0.02) \cdot 10^{-8}. \quad (13)$$

It is natural to assume that the monopole form is also a good parametrization for the form factor in symmetric kinematics

$$F_{\pi\gamma^*\gamma^*}(t, t) = \frac{1}{1 + t/s_1}. \quad (14)$$

The scale s_1 can be fixed from the relation for the slopes of the form factors in symmetric and asymmetric kinematics at low t [13],

$$-\left.\frac{\partial F_{\pi\gamma^*\gamma^*}(t, t)}{\partial t}\right|_{t=0} = -2 \left.\frac{\partial F_{\pi\gamma^*\gamma^*}(t, 0)}{\partial t}\right|_{t=0}, \quad (15)$$

that gives $s_1 = s_0/2$. Note that a similar reduction of the scale is also predicted by OPE QCD from the large momentum behavior of the form factors: $s_1^{\text{OPE}} = s_0^{\text{OPE}}/3$ [14]. Thus, the estimate for $\mathcal{A}(0)$ can be obtained from Eq. (12) by shifting the lower bound by a positive number which belongs to the interval $[3 \ln(2)/2, 3 \ln(3)/2]$

$$\mathcal{A}(q^2 = 0) = -\frac{3}{2} \ln\left(\frac{s_1}{m_e^2}\right) - \frac{5}{4} = -21.9 \pm 0.3. \quad (16)$$

With this result the branching ratio becomes

$$B(\pi^0 \rightarrow e^+e^-) = (6.23 \pm 0.09) \cdot 10^{-8}. \quad (17)$$

This is 3.3 standard deviations lower than the KTeV result given by Eq. (1).

5 Other decay modes

The $\eta \rightarrow l^+l^-$ decay can be analyzed in a similar manner. As in the pion case, the CLEO Collaboration has parameterized the data for the η -meson in the monopole form [12]:

$$F_{\eta\gamma^*\gamma^*}^{\text{CLEO}}(t, 0) = \frac{1}{1 + t/s_{0\eta}^{\text{CLEO}}}, \quad (18)$$

$$s_{0\eta}^{\text{CLEO}} = (774 \pm 29 \text{ MeV})^2,$$

which is very close to the relevant pion parameter. Then following the previous case (with evident substitutions), one finds the bounds for the $q^2 \rightarrow 0$ limit of the amplitude $\eta \rightarrow \mu^+\mu^-$ as

$$\mathcal{A}_\eta(q^2 = 0) > -\frac{3}{2} \ln\left(\frac{s_{0\eta}^{\text{CLEO}}}{m_\mu^2}\right) - \frac{5}{4} = -(7.2 \pm 0.1), \quad (19)$$

and for $\eta \rightarrow e^+e^-$ one gets again Eq. (12). The obtained estimates allow one to find the bounds for the branching ratios

$$B(\eta \rightarrow \mu^+\mu^-) < (6.23 \pm 0.12) \cdot 10^{-6}, \quad (20)$$

$$B(\eta \rightarrow e^+e^-) > (4.33 \pm 0.02) \cdot 10^{-9}.$$

It is important to note that for the decay $\eta \rightarrow \mu^+\mu^-$ we get the upper limit for the branching. This is because the real part of the amplitude for this process taken at the physical point $q^2 = m_\eta^2$ for the parameter $s_{0\eta}^{\text{CLEO}}$ remains negative and a positive shift due to the change of the scale $s_{0\eta} \rightarrow s_{1\eta}$ reduces the absolute value of the real part of the amplitude $|\text{Re}\mathcal{A}(m_\eta^2)|$. At the same time, considering the decays of π^0 and η into an electron-positron pair, the evolution to physical point (8) makes the real part of the amplitude to be positive for the parameter s_0^{CLEO} and the absolute value of the real part of the amplitude increases in changing the scales of the meson form factors.

The predicted branchings are given in the Table and compared with existing experimental data. The so-called unitary bound appears if in (2) only the imaginary part of the amplitude which is model independent is taken into account. The CLEO bound corresponds to the estimate of the real part of the amplitude basing on the CELLO and CLEO data on the meson transition from factors [10]. The fourth column of the Table contains the predictions where in addition the constraint from OPE QCD on the transition form factor for arbitrary photon virtualities is taken into account[10].

The results that take into account the mass corrections to the amplitude [20], mainly due to powers $(M/\Lambda)^2$, where M is the pseudoscalar meson mass and $\Lambda \approx M_\rho$ is characteristic scale of the pion transition form factor, are given in the fifth column of the Table. They are essentially visible for $\eta(\eta')$ meson decays. It is interesting that for η decay to muons the mass correction shifts the theoretical prediction in the direction to the unitary bound and thus opposite to the experimental result [16]. Thus, it would be very desirable to check experimentally the predicted bounds for the process $\eta \rightarrow \mu^+\mu^-$. Also note the recent measurement by the WASA/Celcius Collaboration [15] which improves the upper limit for the branching $\eta \rightarrow e^+e^-$.

For η' decays there appear new thresholds in addition to the two-photon one. In general, this violates the unitary bound because the correction A_z gains an imaginary part at $z = (M/\Lambda)^2 > 1$

$$\Delta\Im\mathcal{A} = -\frac{\pi}{\beta} \left(1 - \frac{1}{z}\right)^2 \ln\left(\frac{1+\beta}{1-\beta}\right) \Theta(z-1). \quad (21)$$

As it is seen from the table, this happens for the $\eta' \rightarrow \mu\mu$ channel. Nevertheless, it turns out that the predictions for this channel are quite accurate.

Table 1. Values of the branchings $B(P \rightarrow l^+l^-)$ obtained in our approach and compared with the available experimental results.

R_0	Unitary bound	CLEO bound	CLEO+OPE [10]	[20]	Experiment
$R_0(\pi^0 \rightarrow e^+e^-) \times 10^8$	≥ 4.69	$\geq 5.85 \pm 0.03$	6.23 ± 0.12	6.26	7.49 ± 0.38 [1]
$R_0(\eta \rightarrow \mu^+\mu^-) \times 10^6$	≥ 4.36	$\leq 6.23 \pm 0.12$	5.12 ± 0.27	4.64	5.8 ± 0.8 [16]
$R_0(\eta \rightarrow e^+e^-) \times 10^9$	≥ 1.78	$\geq 4.33 \pm 0.02$	4.60 ± 0.09	5.24	$\leq 2.7 \cdot 10^4$ [15]
$R_0(\eta' \rightarrow \mu^+\mu^-) \times 10^7$	≥ 1.35	$\leq 1.44 \pm 0.01$	1.364 ± 0.010	1.30	
$R_0(\eta' \rightarrow e^+e^-) \times 10^{10}$	≥ 0.36	$\geq 1.121 \pm 0.004$	1.178 ± 0.014	1.86	

6 Possible explanations of the effect

Therefore, it is extremely important to trace possible sources of the discrepancy between the KTeV experiment and theory. There are a few possibilities: (1) problems with (statistic) experiment procession, (2) inclusion of QED radiation corrections by KTeV is wrong, (3) unaccounted mass corrections are important, and (4) effects of new physics. At the moment, the last possibilities were reinvestigated. In [17], the contribution of QED radiative corrections to the $\pi^0 \rightarrow e^+e^-$ decay, which must be taken into account when comparing the theoretical prediction (17) with the experimental result (1), was revised. Comparing with earlier calculations [18], the main progress is in the detailed consideration of the $\gamma^*\gamma^* \rightarrow e^+e^-$ subprocess and revealing of dynamics of large and small distances. Occasionally, this number agrees well with the earlier prediction based on calculations [18] and, thus, the KTeV analysis of radiative corrections is confirmed. In [19, 20] it was shown that the mass corrections are under control and do not resolve the problem. So our main conclusion is that the inclusion of radiative and mass corrections is unable to reduce the discrepancy between the theoretical prediction for the decay rate (17) and experimental result (1).

7 $\pi^0 \rightarrow e^+e^-$ decay as a filtering process for low mass dark matter

If one thinks about an extension of the Standard Model in terms of heavy, of an order of 100 GeV or higher, particles, then the contribution of this sort of particles to the pion decay is negligible. However, there is a class of models for description of Dark Matter with a mass spectrum of particles of an order of 10 MeV [26]. This model postulates a neutral scalar dark matter particle χ which annihilates to produce electron/positron pairs:

$\chi\chi \rightarrow e^+e^-$. The excess positrons produced in this annihilation reaction could be responsible for the bright 511 keV line emanating from the center of the galaxy [27]. The effects of low mass vector boson U appearing in such model of dark matter were considered in [28] where the excess of KTeV data over theory put the constraint on coupling which is consistent with that coming from the muon anomalous magnetic moment and relic radiation [29]. Thus, the pion decay might be a filtering process for light dark matter particles.

8 Constraints from BABAR data

Let us now consider the amplitude $\pi^0 \rightarrow e^+e^-$ in the context of the constituent quark model [22, 23]. Within this model, the pion form factor is given by the quark-loop (triangle) (Fig. 1) diagram with momentum independent constituent quark mass. The result for the form factor in symmetric kinematics is given by [23]

$$F_{\pi\gamma^*\gamma^*}(t, t) = \frac{2M_Q^2}{\beta_Q t} \ln \frac{\beta_Q + 1}{\beta_Q - 1}, \quad (22)$$

where $\beta_Q = \sqrt{1 + \frac{4M_Q^2}{t}}$, and the amplitude at zero is

$$\mathcal{A}(0) = \frac{3}{2} \ln\left(\frac{m_e^2}{M_Q^2}\right) - \frac{17}{4}. \quad (23)$$

It is interesting to remind that in asymmetric kinematics the form factor has double logarithmic asymptotics at large momentum transfer $\log^2(Q^2/M_q^2)$ [23]

$$F_{\pi\gamma\gamma^*}(t, 0) = \frac{m_\pi^2}{m_\pi^2 + t} \frac{1}{2 \arcsin^2\left(\frac{m_\pi}{2M_Q}\right)} \left\{ 2 \arcsin^2\left(\frac{m_\pi}{2M_Q}\right) + \frac{1}{2} \ln^2 \frac{\beta_Q + 1}{\beta_Q - 1} \right\}. \quad (24)$$

Recently BABAR collaboration announced new data [21] on pion transition form factor $F_{\pi\gamma\gamma^*}(t, 0)$ at very large t up to 40 GeV². The data are in strong contradiction with massless QCD predicting asymptotic $1/t$ behavior with single logarithmic modulation in leading order. However, the BABAR data are well fitted by (24) if the parameter M_Q is taken as $M_Q = 135$ MeV. Then the amplitude at zero is $\mathcal{A}(0) = -20.98$ which is still far from numbers corresponding to KTeV: $\mathcal{A}(0) = -18.6 \pm 0.9$. In [24] it was also noted that in order to get reasonable estimate of the hadronic vacuum polarization to the anomalous magnetic moment of muon it is necessary to take the quark mass rather small $M_Q = 180$ MeV, the value which is close to the pion mass.

Within perturbative QCD one possible scenario to explain the form factor growth faster than expected is to assume that the full resummation of perturbative logarithms is important¹. Indeed, sometime ago Manohar augmented [25] that for the pion transition form factor in kinematics when one photon is virtual and other is quasireal the resummation effects dominate its behavior at large fixed Q^2 and probably BABAR (if confirmed) observes these effects (logarithmic or powerlike).

5

Further independent experiments at KLOE, NA48, WASAatCOSY, BES III and other facilities will be crucial for resolution of the problem with the rare leptonic decays of light pseudoscalar mesons. Also it is important to confirm the theoretical base for maximally model independent prediction of the branchings by getting more precise data on the pion transition form factor in asymmetric as well in symmetric kinematics in wider region of momentum transfer that is soon expected from BABAR and BELLE collaborations.

Acknowledgements. We are grateful to the Organizers and personally professor V. Skalozub for a nice meeting and kind invitation to present our results.

References

- [1] E. Abouzaid et al. Phys. Rev. **D75** (2007) 012004.
- [2] S. Drell, Nuovo Cim. **XI** (1959) 693.
- [3] M. Berman and D.A. Geffen, Nuovo Cim. **XVIII** (1960) 1192.
- [4] L. Bergstrom, Z. Phys. **C14** (1982) 129.
- [5] L. Bergstrom, E. Masso, L. Ametlier and A. Ramon, Phys. Lett. **B126** (1983) 117.
- [6] G. D'Ambrosio and D. Espriu, Phys. Lett. **B175**, 237 (1986).
- [7] M. J. Savage, M. E. Luke, and M. B. Wise, Phys. Lett. **B291**, 481 (1992), hep-ph/9207233.
- [8] L. Ametlier, A. Bramon, and E. Masso, Phys. Rev. **D48**, 3388 (1993), hep-ph/9302304.
- [9] G. V. Efimov, M. A. Ivanov, R. K. Muradov, and M. M. Solomonovich, JETP Lett. **34**, 221 (1981).
- [10] A. E. Dorokhov and M. A. Ivanov, Phys. Rev. **D75** (2007) 114007.

¹I am indebted to A.A. Pivovarov for discussion this point.

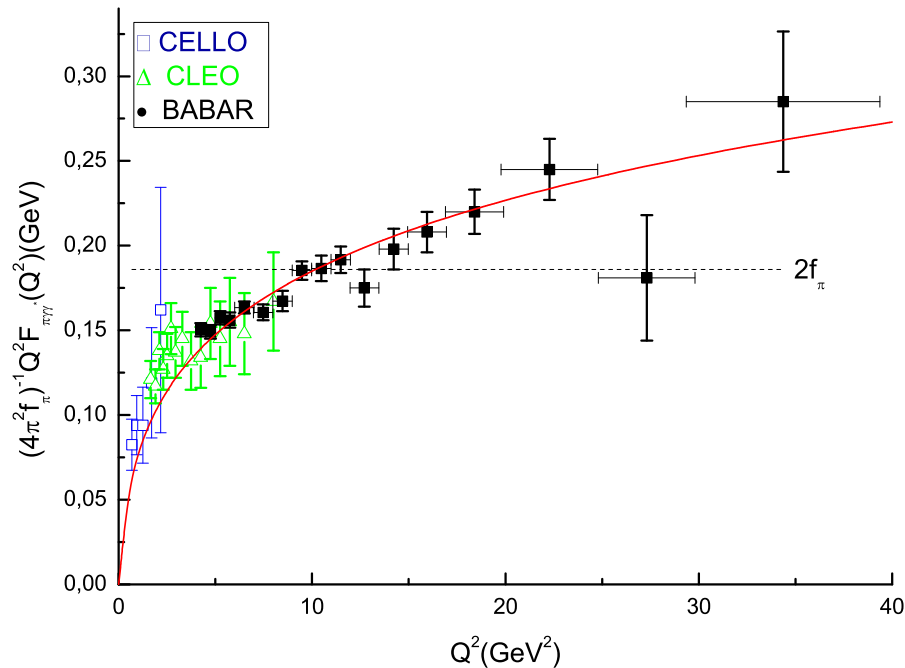


Figure 2. The transition form factor $\pi^0 \rightarrow \gamma^*\gamma$. The data are from CELLO [11], CLEO [12] and BABAR [21] Collaborations. The dashed line is massless QCD asymptotic limit. The solid line is the form factor calculated from massive triangle diagram, Eq. (24), with mass parameter taken as $M_q = 135$ MeV.

- [11] H. J. Behrend *et al.* [CELLO Collaboration], *Z. Phys. C* **49** (1991) 401.
- [12] CLEO, J. Gronberg *et al.*, *Phys. Rev.* **D57** (1998) 33.
- [13] A. E. Dorokhov, A. E. Radzhabov and M. K. Volkov, *Eur. Phys. J. A* **21** (2004) 155 [arXiv:hep-ph/0311359].
- [14] G. P. Lepage and S. J. Brodsky, *Phys. Rev. D* **22** (1980) 2157.
- [15] M. Berlowski *et al.*, *Phys. Rev. D* **77** (2008) 032004.
- [16] R. Abegg *et al.*, *Phys. Rev. D* **50** (1994) 92.
- [17] A. E. Dorokhov, E. A. Kuraev, Yu. M. Bystritskiy and M. Secansky, *Eur. Phys. J. C* **55** (2008) 193, hep-ph/0801.2028.
- [18] L. Bergstrom, *Z. Phys. C* **20** (1983) 135.
- [19] A. E. Dorokhov and M. A. Ivanov, *JETP Lett.* **87** (2008) 531, hep-ph/0803.4493.
- [20] A. E. Dorokhov, M. A. Ivanov and S. G. Kovalenko, arXiv:0903.4249 [hep-ph].
- [21] Selina Li, Representing the BaBar Collaboration, Photon 2009 Conference, 11-15 May 2009, Hamburg, Germany, <http://photon09.desy.de>; BABAR Collaboration, "Measurement of the $\gamma\gamma^* \rightarrow \pi^0$ transition form factor", arXiv:0905.4778.
- [22] S. B. Gerasimov, *Yad. Fiz.* **29** (1979) 513 [*Sov. J. Nucl. Phys.* **29** (1979 ERRAT,32,156:1980) 259],
- [23] L. Ametller, L. Bergstrom, A. Bramon and E. Masso, *Nucl. Phys. B* **228** (1983) 301.
- [24] A. A. Pivovarov, *Phys. Atom. Nucl.* **66** (2003) 902 [*Yad. Fiz.* **66** (2003) 934] [arXiv:hep-ph/0110248].
- [25] A. V. Manohar, *Phys. Lett. B* **244** (1990) 101.
- [26] C. Boehm and P. Fayet, *Nucl. Phys. B* **683** (2004) 219 [arXiv:hep-ph/0305261].
- [27] G. Weidenspointner *et al.*, arXiv:astro-ph/0601673.
- [28] Y. Kahn, M. Schmitt, T. Tait, *Phys. Rev. D* **78** (2008) 115002, hep-ph/0712.0007.
- [29] P. Fayet, *Phys. Rev.* **D75** 115017 (2007).