

PAPER • OPEN ACCESS

CompHEP: developments and applications

To cite this article: E.E. Boos *et al* 2017 *J. Phys.: Conf. Ser.* **920** 012007

View the [article online](#) for updates and enhancements.

Related content

- [Search for Higgs and Supersymmetry](#)
Dirk Zerwas
- [Single Production of Charged Gauge Boson \$W_{\pm}\$ from Left-Right Twin Higgs Model in Association with Top Quark at LHC](#)
Liu Yao-Bei, Wang Xue-Lei, Han Hong-Mei *et al.*
- [Effective SUSY modified after LHC run](#)
Jihn E Kim

CompHEP: developments and applications

E.E. Boos, V.E. Bunichev, M.N. Dubinin, V.A. Ilyin and V.I. Savrin
(on behalf of CompHEP Collaboration)

Skobeltsyn Institute of Nuclear Physics, Lomonosov Moscow State University, Leninskiye
Gory, 119991 Moscow, Russian Federation

E-mail: comphep@theory.sinp.msu.ru

Abstract. New developments of the CompHEP package and its applications to the top quark and the Higgs boson physics at the LHC collider are reviewed. These developments were motivated mainly by the needs of experimental searches of DO (Tevatron) and CMS (LHC) collaborations where identification of the top quark and the Higgs boson in the framework of the Standard Model (SM) or possible extensions of the SM played an important role. New useful features of the CompHEP Graphics User Interface (GUI) are described.

1. Introduction

The general plan of development of the CompHEP project was proposed more than twenty five years ago [1]. Despite the fact that the initial objectives of the project were related to the calculation of the most relevant for the 1990-ies signal and background processes at the e^+e^- collider LEP2 and the $p\bar{p}$ collider Tevatron, very general approach to the simulation of particle production channels was developed. It was supposed to generate unweighed events for the detector simulation of any signal in the SM or beyond using a database for basic Lagrangians which would allow to generate complete gauge-invariant sets of diagrams for the signal and the irreducible background in the fully automatic regime with the following evaluation of squared amplitudes. The original scheme can be found in [2]. The primary version of CompHEP used the Pascal language for PC AT and generated automatically REDUCE [3] format code for the squared amplitude corresponding to a gauge-invariant set of diagrams [2, 4]. It was expected that time that analytic results for the differential and the total cross sections could be straightforwardly obtained and used to interpret an experimental data. Obviously, such a development strategy did not allow to reduce to an acceptable form bulky analytical expressions for the matrix element squared which correspond to several tens or hundreds of diagrams, forming a complete set. So developers had to give up modelling based on compact analytical results (such as signal processes library in the approximation of infinitely small width) and go to generation of FORTRAN codes on the basis of exact symbolic matrix element squared, which were used in the following numerical integration. Automatic generation of FORTRAN codes suitable for the following Monte Carlo (MC) integration by means of BASES generator [5, 6], which was provided by the GRACE [7] group, was an important step forward. Jointly, although using different methods, MC calculations were performed for a large set of LEP2 processes [8], which allowed to test reliably all the algorithms involved in calculation. A number of phenomenological applications were related not only to e^+e^- mode, but also to possible γe and $\gamma\gamma$ modes of JLC



and TESLA linear colliders [9]. In the following the channels of four-fermion production at LEP2 were evaluated [10]–[14], which were the first calculations of high precision at the complete tree-level. Numerous cross-checks of CompHEP and GRACE algorithms and comparisons of results for a large set of physical channels were very important for the following applications to collider physics.

In the last twenty years extensive symbolic and numerical calculations and generation of unweighed events for LEP2, HERA, TESLA, Tevatron, ILC and LHC analyses [15]–[30],[31] have been performed by means of CompHEP versions 3 and 4 [32, 33, 34, 35]. Single top quark production at the Tevatron $p\bar{p}$ collider [36] was followed by the single top observation at the LHC [37, 38]. CompHEP-based calculations of the complete tree-level sets of diagrams and the following event generation at the next-to-leading order (NLO) level were used for analyses of the single top quark signal [39]. Simulations of the single top quark production are important both for precise measurements and for searches of new physics [40, 41]. Convincing statistical significance determined a discovery of the Higgs-like boson signal at the LHC in 2012 [42, 43], which was investigated intensively in many production channels for identification purposes, either it was a signal of the Standard Model (SM) Higgs boson or a signal beyond the SM (BSM signal). Simulation of the Higgs boson signal at the LHC can be sensibly performed only for complete sets of tree-level diagrams, when large backgrounds, typical for hadronic colliders, can be put under control. A number of CompHEP technical developments which have been used in the LHC analyses are described in some details below.

2. Model-independent SM extensions for the top quark and the Higgs boson production

In order to measure precisely the couplings of the Higgs boson to vector bosons and fermions of the SM or a model BSM, a combined analysis of all the observed production channels has been performed. Combined analysis gives a possibility to extract 'pseudo observables' [44, 45] which depend on ratios of the experimentally observed production cross sections and decay widths to those calculated in the SM. In such analyses it is assumed that properties of the SM Higgs boson are modified by a new physics at the TeV scale Λ , so the SM is an effective theory at the W^\pm, Z scale. In the framework of the technical modification under consideration either a generic set of the higher-dimension effective operators is introduced in addition to the SM Lagrangian (note that the same set of effective operators can be a remnant of different field theory models at a multiTeV energy scale), or consequences of a definite renormalizable model are evaluated at the electroweak scale. In both types of extensions the question to what extent the observed boson is consistent with the SM Higgs boson seems most interesting to be addressed.

Extensions by the dimension-six effective operators have been considered recently in different bases (e.g.[46]–[49]). In the following we use [50, 51, 52] where a rather general framework of the SM extension by the dimension-six effective operators was analysed. At the electroweak energy scale the new physics degrees of freedom can be integrated out and the low-energy effective Lagrangian can be written as

$$L_{eff} = L_{SM} + \frac{1}{\Lambda^2} \sum_{k=V,F} C_{k\Phi} O_{k\Phi}$$

where Λ is a scale of new physics and the anomalous couplings $C_{k\Phi}$ modify the SM Higgs boson couplings to the vector bosons and to the fermions. A general set of the dimension-six operators from [50] in the Buchmueller-Wyler basis [53] modified by the subtraction of v.e.v.: $\Phi^\dagger\Phi \rightarrow \Phi^\dagger\Phi - v^2/2$ (see [54]) to avoid undesirable mixing in the gauge field kinetic terms, can be reduced to a restricted set of only five fermion-Higgs and vector boson-Higgs operators $O_{t\Phi}$, $O_{b\Phi}$, $O_{\tau\Phi}$ and $O_\Phi^{(1)}$, $O_{\Phi G}$, disposing the tensor structure of interaction vertices identical to the

SM and dependent only on the two anomalous couplings. The coupling c_V rescales the vector boson-Higgs vertices, and the coupling c_F rescales the fermion-anti-fermion-Higgs vertices. The anomalous couplings C_n, C_{mn} in front of the dimension-six operators O_n, O_{mn} are conformably redefined [50], for example

$$c_F = 1 + C_{t\Phi} \cdot \frac{v^2}{\Lambda^2}, \quad c_V = 1 + \frac{v^2}{2\Lambda^2} \cdot C_\Phi^{(1)}, \quad c_G = c_F + \frac{6\pi}{\alpha_s} \cdot C_{\Phi G} \cdot \frac{v^2}{\Lambda^2}, \quad \dots$$

(here $v = 246$ GeV). The last equation above means that in the case under consideration the one-loop $H \rightarrow \gamma\gamma$ and $H \rightarrow gg$ vertices are 'resolved' in the sense that the anomalous parameters c_V and c_F are included in the one-loop effective c_G and c_γ couplings which parametrise $H \rightarrow gg$ and $H \rightarrow \gamma\gamma$ vertices. This circumstance is different from 'kappa-framework'.

Anomalous interactions of the third generation fermions (t, b) appear from the general local $SU(3) \times SU(2) \times U(1)$ invariant effective Lagrangian terms [56]. Seven dimension-six effective operators provide anomalous contributions to the Wtb vertex. Various contributions of these operators which include the gauge bosons and the Higgs sector isodoublet are usually denoted by $O_{qW}, O_{\Phi q}^3, O_{Db}, O_{bW\Phi}, O_{Dt}, O_{tW\Phi}$ and O_{t3} . Experimental restrictions on the rare processes exclude some contributions. Application of the equations of motion move some operators to other category leaving only two meaningful operators of the seven, $O_{bW\Phi}$ and $O_{tW\Phi}$:

$$\begin{aligned} O_{tW\Phi} &= C_{tW\Phi} [(\bar{q}_L \sigma^{\mu\nu} \tau^i t_R) \Phi + \Phi^\dagger (\bar{t}_R \sigma^{\mu\nu} \tau^i q_L)] W_{\mu\nu}^i \\ O_{bW\Phi} &= C_{bW\Phi} [(\bar{q}_L \sigma^{\mu\nu} \tau^i b_R) \Phi + \Phi^\dagger (\bar{b}_R \sigma^{\mu\nu} \tau^i q_L)] W_{\mu\nu}^i \end{aligned}$$

where q_L is the left-handed third-family doublet, Φ is the Higgs boson doublet, $\tau^i = \sigma^i/2$, $W_\mu = \tau^i W_\mu^i$. Redefining anomalous couplings C after rotation to the physical fields $f_{2L} = \frac{C_{tW\Phi} v \sqrt{2} m_W}{\Lambda^2 g}$ and $f_{2R} = \frac{C_{bW\Phi} v \sqrt{2} m_W}{\Lambda^2 g}$ ($v \sqrt{g^2 + g'^2} = 2m_Z$, $s_W^2 = 1 - m_W^2/m_Z^2$) we get the standard representation of the anomalous top quark interaction Lagrangian

$$L_{Wtb} = \frac{g}{\sqrt{2}} \bar{b} \gamma^\mu (f_{1L} P_L + f_{1R} P_R) t W_\mu^- + \frac{g}{\sqrt{2}} \bar{b} \frac{\sigma^{\mu\nu}}{m_W} (f_{2L} P_L + f_{2R} P_R) t W_{\mu\nu}^- + h.c. \quad (1)$$

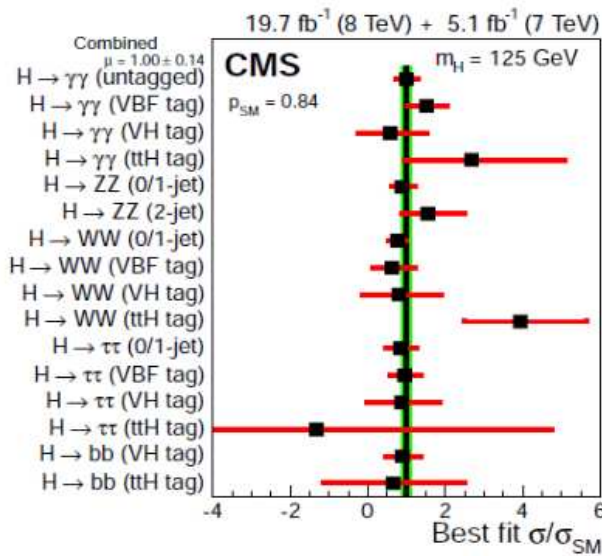


Figure 1. Signal strength and signal strength error for various groups of production channels. The best-fit σ/σ_{SM} for the overall combined analysis where combinations of channels grouped by the production mode and specific kinematics in the final state taken from [55] is indicated by vertical line. Horizontal bars indicate $\pm 1\sigma$ uncertainties in the best-fit σ/σ_{SM} values for individual channels, both statistical and systematic uncertainties are included. Combinations of channels are grouped by dominant decay modes when more than one decay mode contributes to the same final state. Tags in brackets indicate a specific production mechanism.

3. Global fits for the Higgs boson production channels

The method of exclusion contours reconstruction [57, 58, 59, 60] in the anomalous parameter space has been introduced to CompHEP version 4. Theoretical signal strengths in the infinitely small width approximation (ISW or production \times decay approximation) and for the complete gauge-invariant sets of diagrams are defined as

$$\mu_i^{ISW} = \frac{[\sum_j \sigma_{j \rightarrow h} Br(h \rightarrow i)]_{SME}}{[\sum_j \sigma_{j \rightarrow h} Br(h \rightarrow i)]_{SM}}; \quad \mu_i = \frac{\left[\sum_{j=1}^{N_{ch}} \sigma_{j \rightarrow H(off-shell) \rightarrow i} \right]_{SME}}{\left[\sum_{j=1}^{N_{ch}} \sigma_{j \rightarrow H(off-shell) \rightarrow i} \right]_{SM}}$$

where for ISW i is the number of Higgs boson decay channel and j is the number of Higgs production process for a given final state in the SM and in the SM extension (SME). If a signal strength $\hat{\mu}_i$ for an individual channel (see Fig.1) can be expressed using the observed cross section σ_{obs} , the background cross section σ_{backgr} and the SM signal cross section σ_{signal}^{SM} , then the global χ^2 for the signal strengths $\hat{\mu}_i$ is defined as

$$\hat{\mu}_i = \frac{\sigma_{obs,i} - \sigma_{backgr,i}}{\sigma_{signal,i}^{SM}}; \quad \chi^2(\mu_i) = \sum_i^{N_{ch}} \frac{(\mu_i - \hat{\mu}_i)^2}{\sigma_i^2}$$

for the number of production channels N_{ch} . Minimization of $\chi^2 \rightarrow \chi_{min}^2$ gives us 1σ , 2σ and 3σ regions $\chi^2 = \chi_{min}^2 + \Delta\chi^2$ where $\Delta\chi^2$ is defined by cumulative distribution function. Assuming that the signal strengths of various channels have Gaussian distributions with the probability density functions (PDF's) having the expected values $\hat{\mu}_i$ and the dispersions σ_i normalized to one, combined PDF for a number of production channels can be found by multiplication of PDF's for the individual channels. The combined probability density function is also Gaussian characterized by μ_c and σ_c , $1/\sigma_c^2 = \sum_i^{N_{ch}} 1/\sigma_i^2$. The combined PDF allows one to determine, for example, 95% CL exclusion upper μ_U and lower μ_L limits on the signal strength parameter integrating the combined pdf from $\hat{\mu}$ to μ_U and from μ_L to $\hat{\mu}$, respectively, then equating the result to 0.95/2. If the SM is fully adequate, the values of μ_i are as close to one as allowed by experimental errors. Calculation of the $\Delta\chi^2$, see Fig.2, for the best fit defines a *given number* \times CL contours corresponding to the departure of the SM point (1, 1) from the best fit point in the (c_V, c_F) parameter plane. Contours in Fig.3 correspond to 65%, 90% and 99% best fit CL regions with $\Delta\chi^2$ less than 2.10, 4.61 and 9.21, respectively.

Besides the model-independent analyses described above, extensive model-dependent theoretical studies involving the package LanHEP [61, 62] for automatic generation of Feynman rules from the Lagrangian were performed for the MSSM two-doublet Higgs sector [63]-[69].

4. Separation of anomalous contributions to the single top production. Subsidiary fields.

In the situation when several anomalous couplings (AC) coming from different effective operators of higher dimension contribute to some particular production channel at the same time, experimental reconstruction of BSM effects in the multidimensional anomalous coupling space is technically difficult. Moreover, analyses of fancy anomalous mixtures in BSM amplitudes where the Breit-Wigner propagators are also dependent on the several AC are not meaningful with the straightforward calculation. Various anomalous contributions should be separated on the stage of unweighed events generation for the following detector simulation of the event samples which are dependent on an individual AC. Separation of congenerous contributions (e.g. of $\sim 1/\Lambda^2$ leading terms) in the events samples for experimental reconstruction is of major interest. Let us consider an example with the anomalous Wtb vertex, see Eq.(1), which includes three anomalous couplings (AC) beyond the SM. Besides the right-handed vector current coupling

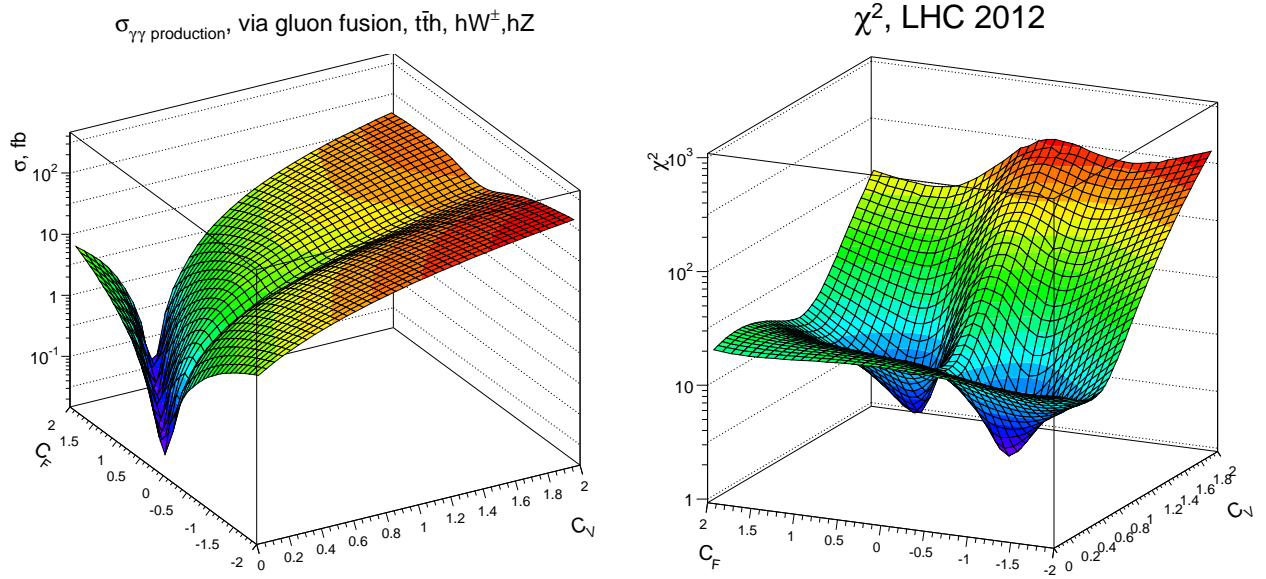


Figure 2. Three-dimensional plots in the (c_V, c_F) parameter space: (a) total cross section for $\gamma\gamma$ production processes at the LHC, $\sqrt{s} = 8$ TeV; (b) three-dimensional plot of χ^2 as a function of (c_V, c_F) , LHC $\sqrt{s} = 8$ TeV - all channels

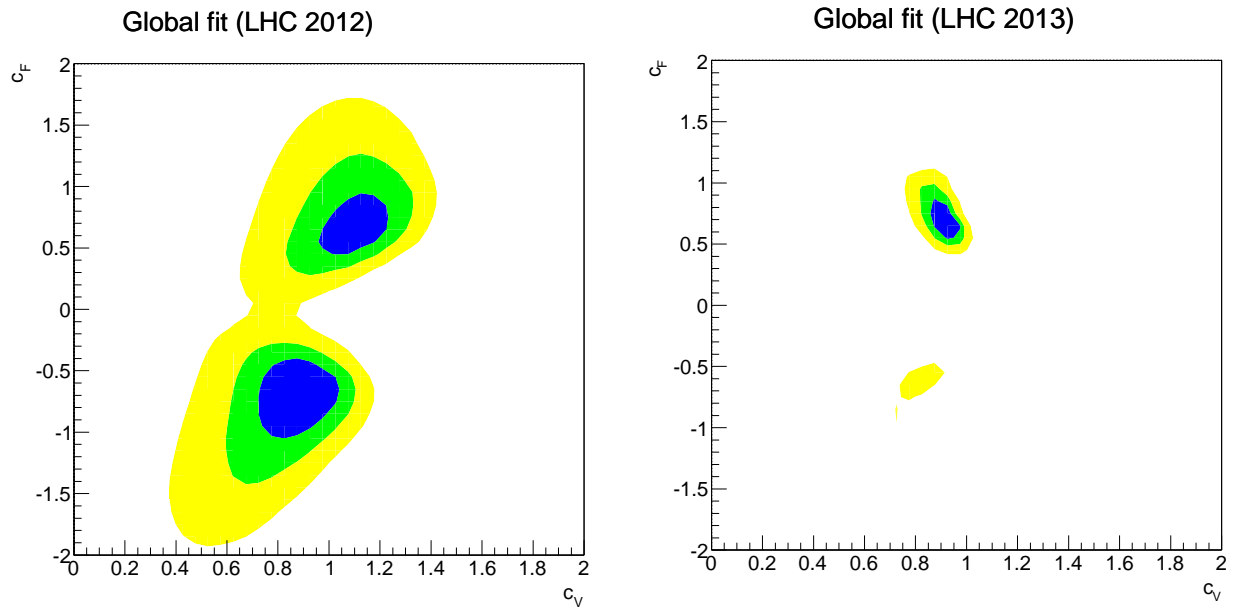


Figure 3. Left panel - three exclusion contours for the combined χ^2 fit in the (c_V, c_F) plane based on 2012 LHC data, right panel - the same based on 2013 LHC data. Blue, green and yellow areas correspond to $\Delta\chi^2 = 2.10, 4.61$ and 9.21 (CL of the fit is 65%, 90% and 99%), respectively. See [50] for details.

f_{1R} it is dependent on the couplings of anomalous magnetic moment type f_{2L} and f_{2R} . So we can write

$$\Gamma_\mu = \Gamma_\mu^{SM} + \Gamma_\mu^{NP_1} + \Gamma_\mu^{NP_2} + \Gamma_\mu^{NP_3}$$

and introduce three subsidiary bosons [70] in the CompHEP Lagrangian table

W boson SM	$\frac{g}{2\sqrt{2}}f_{1L}\gamma^\mu(1-\gamma_5)$
W boson subsidiary 1	$\frac{g}{2\sqrt{2}}f_{1R}\gamma^\mu(1+\gamma_5)$
W boson subsidiary 2	$\frac{g}{2m_W\sqrt{2}}f_{2L}\sigma^{\mu\nu}q_\nu(1+\gamma_5)$
W boson subsidiary 3	$\frac{g}{2m_W\sqrt{2}}f_{2R}\sigma^{\mu\nu}q_\nu(1-\gamma_5)$

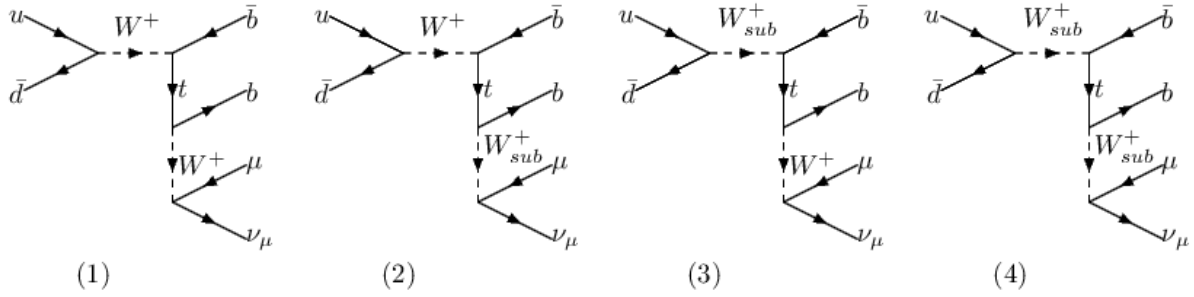


Figure 4. Diagrams (2), (3) and (4) include intermediate vector boson subsidiary fields W_{sub} .

Diagrams for the four-fermion production process $u\bar{d} \rightarrow b\bar{b}\mu^+\nu_\mu$, where anomalous Wtb vertices contribute to the production part and to the decay part of each diagram taken in the infinitely small width approximation, are shown in Fig.4. Diagrams (2),(3) and (4) include the intermediate subsidiary bosons $W_{1,2,3}$. If only f_{1R} coupling is not equal to zero in the Lagrangian Eq.(1), then the structure of matrix element squared for the sum of the four diagrams can be written in the form

$$\begin{aligned}
 |\mathbf{M}|^2 &\sim \frac{1}{\Gamma(f_{1L}, f_{1R})} [(f_{1L})^2 P_1 + (f_{1R})^2 P_2] \times [(f_{1L})^2 D_1 + (f_{1R})^2 D_2] \\
 &\sim \frac{1}{\Gamma(f_{1L}, f_{1R})} [(f_{1L})^4 P_1 D_1 + (f_{1L})^2 (f_{1R})^2 P_1 D_2 + (f_{1L})^2 (f_{1R})^2 P_2 D_1 + (f_{1R})^4 P_2 D_2]
 \end{aligned}$$

where P_1 and P_2 denote the production functions dependent on the four-momenta products and D_1 and D_2 denote the decay functions. Apparently the term $P_1 D_2$ and the term $P_2 D_1$ are of the order of Λ^{-2} while the term $P_2 D_2$ is of the order of Λ^{-4} . They can be easily separated after generation of all squared diagrams by the CompHEP and then omitting diagrams with the two subsidiary bosons W_{sub} . The unweighed event samples are generated for restricted sets of squared diagrams. Using a schematical denomination $(f_{1L}f_{1R}00) \leftrightarrow f_{1L}(1000)$ for an event sample where, for example, only f_{1R} anomalous coupling is taken to be non-zero, we can write

$$(f_{1L}f_{1R}00) \Leftrightarrow (f_{1L})^4 \otimes (1000) \oplus (f_{1L})^2 (f_{1R})^2 \otimes (1100)_{sub} \oplus (f_{1R})^4 \otimes (0100)_{sub}^{sub}.$$

where (0100) event sample coming from diagrams with the two subsidiary bosons does not participate in the simulation.

Data and model comparison of Baesian Neural Network discriminant (BNN) for the LHC physics analysis of the single top quark production based on the $(f_{1L}0f_{2L}0)$ event samples (left weak current SM contribution and the left anomalous tensor contribution) are shown in Fig.5. Exclusion contours in the (f_{1L}, f_{1R}) plane generated for the case $(f_{1L}f_{1R}00)$ of the right vector coupling are shown in Fig.6.

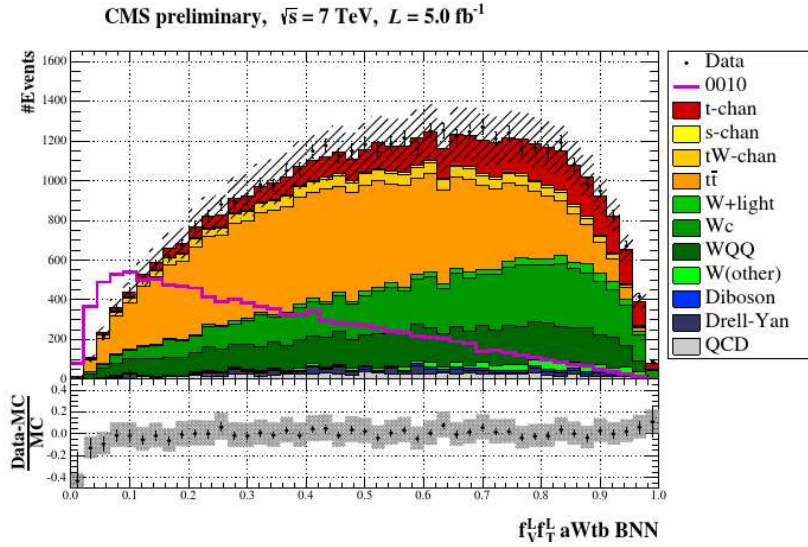


Figure 5. Data and model comparison of BNN discriminant for anomalous Wtb coupling in the case $(f_{1L}f_{1R}00)$, see more details in [71]. The BNN discriminant was trained to separate the SM events and possible events with f_{2L} coupling in the anomalous Wtb vertex. The hashed band corresponds to systematic uncertainty.

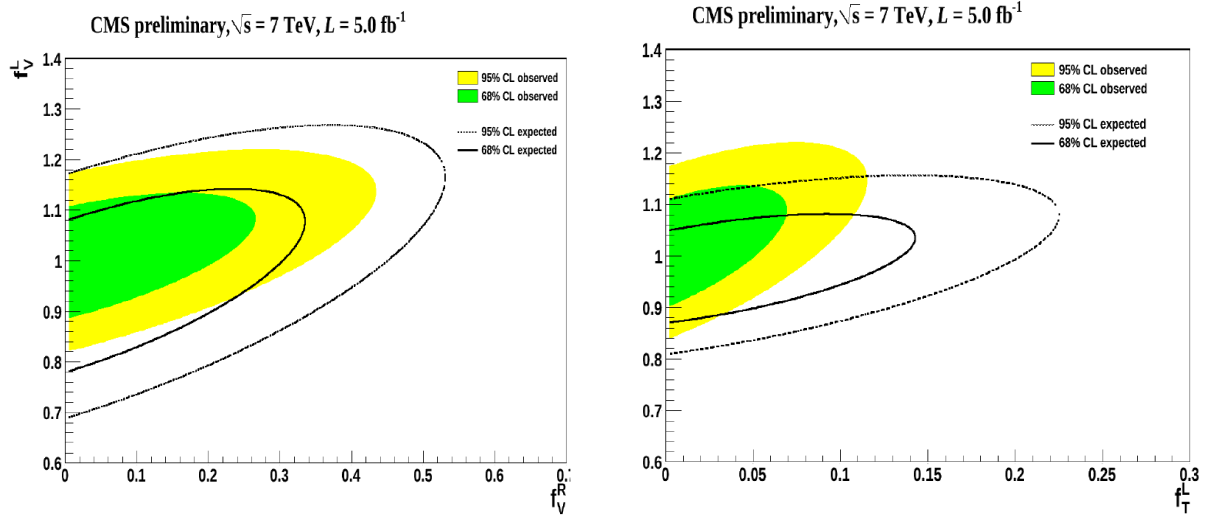


Figure 6. Exclusion contours for the top quark anomalous couplings f_{1L}, f_{1R} (left panel) and f_{2L}, f_{2R} (right panel) taken from [71].

5. New features of GUI

New features of the CompHEP Graphics User Interface (GUI) useful for generation of global fits and exclusion contours are introduced in version 4.6

- Implementation of external functions in the CompHEP Constraints Model Table
- Multiplication of selected squared diagrams on an external function
- Table calculations and algebraic operations with tables cross section/width vs parameters
- ROOT code generation to draw table functions (3D surfaces or 2D contours)
- Generation of the 3D plots for phase space distributions dependent on a model parameter

Table calculations and algebraic operations with tables are needed in the BSM analyses when the total width in the Breit-Wigner propagator of an intermediate particle depends on a number of anomalous couplings. In this case multidimensional total width table is generated in the anomalous coupling space for all partial decay channels which are then summed and used

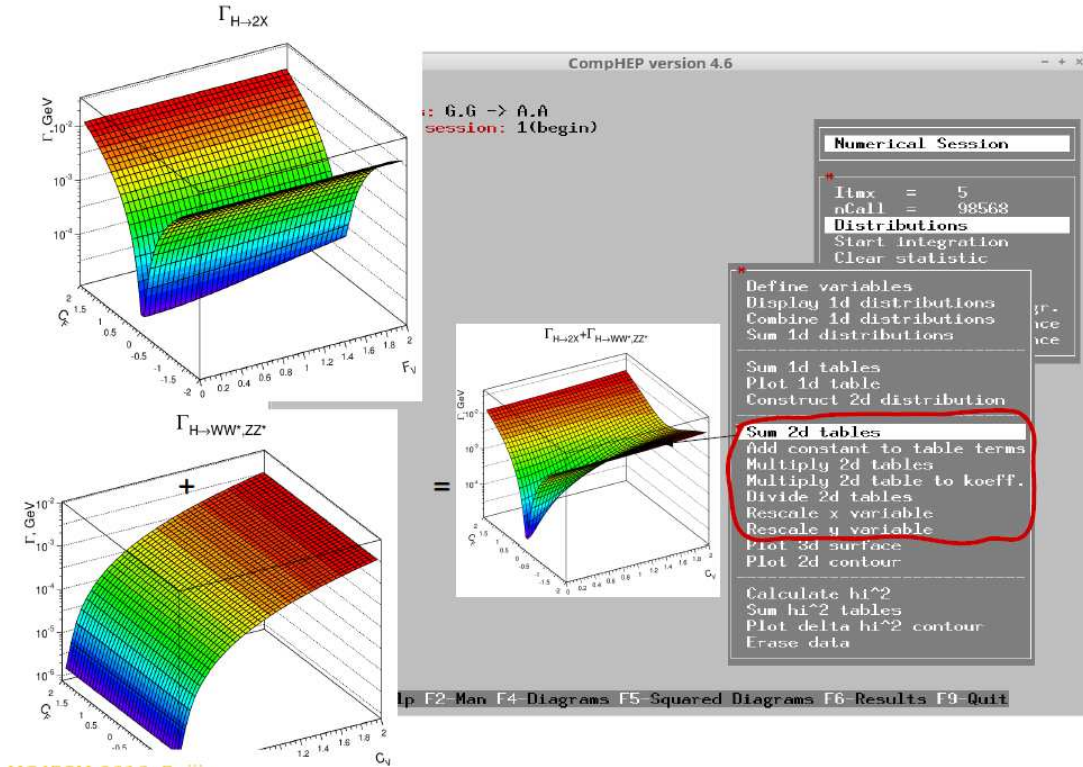


Figure 7. An example of CompHEP GUI for operation with tables for the decay width $H \rightarrow 2X$ dependent on the anomalous couplings c_V and c_F .

in the squared amplitude calculation for the signal. An example of GUI for the Higgs boson decay $H \rightarrow \gamma\gamma$ in the (c_V, c_F) coupling space (see Section 2) is depicted in Fig.7. An example of ROOT code generation for the sub-process $u\bar{d} \rightarrow t\bar{d}$ can be found in Fig.8 where the 3D t -quark distribution is generated for different values of an anomalous parameter.

6. Summary

The ideology of automatic generation of amplitudes, corresponding to the full set of Feynman rules for a given BSM Lagrangian, symbolic calculations and precise Monte Carlo integration of the complete tree-level diagram sets with subsequent generation of unweighed events demonstrated over the last two decades its efficiency for calculation of signal and background reactions at LEP2, HERA, NLC and simulation of processes for the Tevatron and the LHC.

The initial goal of the CompHEP project discussed in 1988 [1], was the establishment of an effective tool for automatic calculation of the SM signals and backgrounds at UNK (IHEP, Serpukhov) and LEP2. Although the UNK project was terminated and real practical applications started from the LEP2 physics and have been continued for linear colliders and the LHC, it is interesting to what extent the created product was the original intent. Below we reconstruct distributions of 560 citations to the NIM paper (see [33]) in the period 2004-2016, see Fig.9. Distributions of citations over a specific scientific topics and over applications by experimental collaborations are based on the INSPIRE database. Note that the package was used not in the way it had been expected. Most theoretical publications are considering extensions of the SM.

Number of studies for various extensions of the Standard Model in the CompHEP format, published by users of the package, is impressively large despite of the fact that beyond the

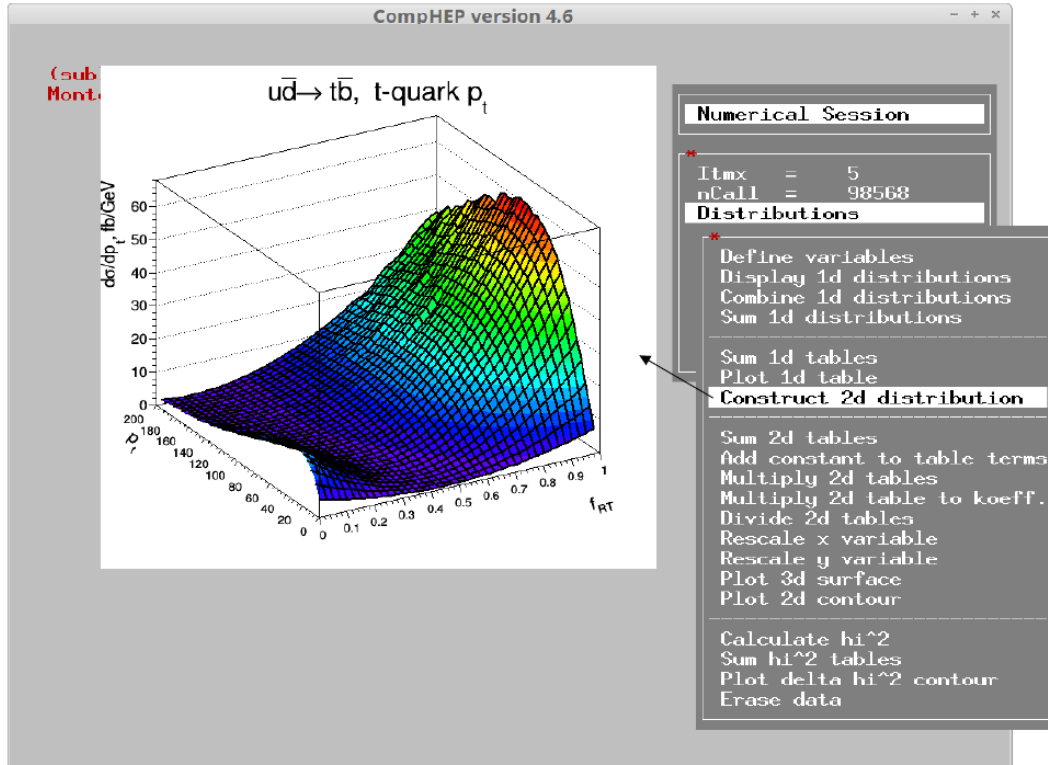


Figure 8. An example of CompHEP GUI for the ROOT code generation when the phase space distribution over p_T is dependent on an anomalous coupling.

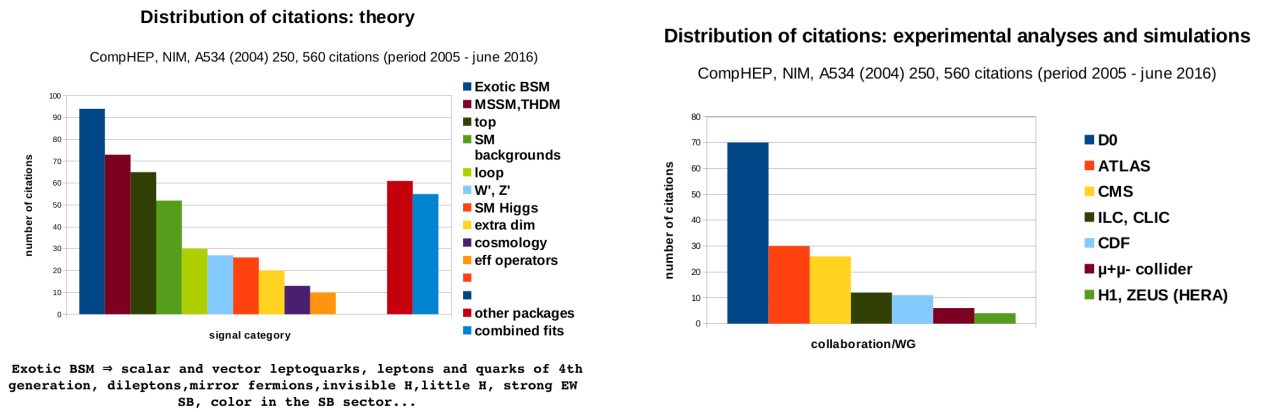


Figure 9. Distributions of theoretical and experimental citations.

'proliferation' of chiral $SU(2)$ multiplets and singlets of fundamental fermions, CompHEP version 4 provides rather restricted possibilities for work with models of higher-rank gauge symmetry groups. Rich possibilities are going to be implemented in version 5 of CompHEP, which includes the symbolic calculation kernel based on FORM [72, 73].

6.1. Acknowledgments

This proceeding is dedicated to the memory of Professor Yoshimitsu Shimizu, the coordinator of the GRACE group. His immeasurable activity in the organization of scientific cooperation between KEK and SINP MSU played a major role in the progress of work on packages of automatic calculations GRACE and CompHEP. E.B., M.D. and V.I. are grateful to the organizers of CPP 2016 for hospitality. This work was supported by Russian Science Foundation Grant No. 16-12-10280.

References

- [1] Boos E E, Dubinin M N, Edneral V F, Ilyin V A, Kryukov A P, Pukhov A E, Rodionov A Ya, Savrin V I, Slavnov D A and Taranov A Yu 1989 CompHEP - computer system for calculation of particle collisions at high energies *Preprint SINP MSU* 89-63/140
- [2] Boos E E, Dubinin M N, Edneral V F, Ilyin V A, Kryukov A P, Pukhov A E and Shichanin S A 1991 Applications of CompHEP system to particle processes calculation, *Preprint SINP MSU* 91-9/213
- [3] Hearn A C 1993 *REDUCE user's manual, version 3.5* (RAND publication)
- [4] Boos E E, Dubinin M N, Ilyin V A, Pukhov A E and Savrin V I 1994 CompHEP: Specialized package for automatic calculations of elementary particle decays and collisions INP MSU Report 94-36-358 (*Preprint hep-ph/9503280*)
- [5] Kawabata S 1986 A New Monte Carlo Event Generator for High-Energy Physics *Comp.Phys.Commun.* **41** 127
- [6] Kawabata S 1992 *Monte Carlo integration packages BASES and DICE, New Computing Techniques in Physics Research, Proc. of 2nd International Workshop on Software Engineering, Artificial Intelligence and Expert Systems for High-Energy and Nuclear Physics* (River Edge, N.J.: World Scientific) ed D Perret-Gallix p 745
- [7] Ishikawa T, Kaneko T, Kato K, Kawabata S, Shimizu Y and Tanaka H 1993 *GRACE manual: Automatic generation of tree amplitudes in Standard Models: Version 1.0* (Tsukuba:KEK) KEK report 92-19
- [8] Boos E, Dubinin M, Edneral V, Ilyin V, Pukhov A, Shichanin S, Kaneko T, Kawabata S, Kurihara Y, Shimizu Y and Tanaka H 1994 Automatic calculation in high-energy physics by Grace/Chanel and CompHEP *Int.J.Mod.Phys. C* **5** 615
- [9] Boos E, Dubinin M, Ilyin V and Pukhov A 1993 e^+e^- Collisions at 500 GeV: the Physics Potential. *Proc. of the Workshop Munich, Annecy, Hamburg* ed P Zerwas (Hamburg:DESY) DESY report 93-123C, p 561
- [10] Bardin D, Kleiss R et al. 1996 *Physics at LEP2*, ed G Altarelli, T Sjostrand and F Zwirner (Geneva:CERN) CERN report 96-01 vol I p 3 (*Preprint hep-ph/9709270*)
- [11] Boudjema F, Mele B et al. 1996 *Physics at LEP2*, ed G Altarelli, T Sjostrand and F Zwirner (Geneva:CERN) CERN report 96-01 vol I p 207 (*Preprint hep-ph/9601224*)
- [12] Carena M, Zerwas P et al, 1996 *Physics at LEP2*, ed G Altarelli, T Sjostrand and F Zwirner (Geneva:CERN) CERN report 96-01 vol II p 351 (*Preprint hep-ph/9602250*)
- [13] Mangano M et al, 1996 *Physics at LEP2*, ed G Altarelli, T Sjostrand and F Zwirner (Geneva:CERN) CERN report 96-01 vol II p 299 (*Preprint hep-ph/9602203*)
- [14] Grunewald M, Passarino G et al. 2000 *Reports of the Working Groups on Precision Calculations for LEP2 Physics* (Geneva:CERN) CERN report 009-A p 1 (*Preprint hep-ph/0005309*)
- [15] Boos E, Dudko L and Perfilov M 2007 Interference between W' and W in single-top quark production processes *Phys. Lett. B* **655** 245 (*Preprint hep-ph/0610080*)
- [16] Boos E, Dubinin M, Pukhov A, Sachwitz M and Schreiber H J 2001 Single top production in e^+e^- , e^-e^- , γe and $\gamma\gamma$ collisions. *Eur.Phys.J. C* **21** 81
- [17] Boos E, Dubinin M, Pukhov A, Sachwitz M and Schreiber H J 2000 Probe of the Wtb coupling in $t\bar{t}$ pair production at linear colliders *Eur.Phys.J. C* **16** 269
- [18] Boos E, Dudko L and Ohl T 1999 Complete calculations of $Wb\bar{b}$ and $Wb\bar{b} + \text{jet}$ production at Tevatron and LHC: Probing anomalous Wtb couplings in single top production *Eur.Phys.J. C* **11** 473 (*Preprint hep-ph/9903215*)
- [19] Abdullin S, Dubinin M, Ilyin V, Kovalenko D, Savrin V and Stepanov N 1998 Higgs boson discovery potential of LHC in the channel $pp \rightarrow \gamma\gamma + \text{jet}$. *Phys. Lett. B* **431** 410
- [20] Dubinin M N and Song H S 1998 Anomalous W boson production at HERA *Phys.Rev. D* **57** 2927
- [21] Dubinin M N and Song H S 1998 W boson production at upgraded HERA *Monte Carlo generators for HERA physics* (Hamburg:DESY) p 614 (*Preprint hep-ph/9906384*)
- [22] Berends F and Dubinin M 1997 Contact interactions in the four fermion processes at LEP-2 and HERA, *Proc. of 11th International Workshop on High Energy Physics and Quantum Field Theory* (Moscow:MSU) p 151 (*Preprint hep-ph/9702344*)

- [23] Dubinin M 1994 Three jet events in gamma gamma collisions *Proc. of 9th International Workshop on High Energy Physics and Quantum Field Theory* (Moscow:MSU) p 135 (*Preprint* hep-ph/9504366)
- [24] Dubinin M, Edneral V, Kurihara Y and Shimizu Y 1994 Complete tree level calculation of the $e^+e^- \rightarrow \nu\bar{\nu}b\bar{b}$ process and the Higgs signal at LEP200 and Next Linear Colliders *Phys. Lett. B* **329** 379
- [25] Dubinin M, Kurihara Y and Shimizu Y 1994 Polarization asymmetry and the Higgs boson production mechanisms *Int.J.Mod.Phys. A* **13** 4011
- [26] Boos E, Sachwitz M, Schreiber H J and Shichanin S 1994 Complete tree level calculation of the reaction $e^+e^- \rightarrow \mu^+\mu^-b\bar{b}$ and the Higgs boson signal at LEP-200 and NLC energies *Z.Phys. C* **61** 675
- [27] Boos E, Dubinin M and Dudko L 1996 Higgs boson production under the resonance threshold at LEP-2 *Int.J.Mod.Phys. A* **11** 5015
- [28] Dubinin M, Schreiber H J and Vologdin A 2003 Measurement of the $HZ\gamma$ coupling at the future linear e^+e^- collider *Eur.Phys.J. C* **30** 337
- [29] Dubinin M 2010 Aspects of CompHEP applications to hadronic collider physics *Proc of 3rd Computational Particle Physics Workshop* (PoS:CPP 2010) 002
- [30] Boos E and Dubinin M 1993 Complete tree level calculation of the $e^+e^- \rightarrow Zb\bar{b}$ process at LEP200. Higgs signal and background. *Phys. Lett. B* **308** 147
- [31] Boos E and Dubinin M 2010 Problems of automatic calculation for collider physics *Phys.Usp.* **53** 1039-1051
- [32] Boos E, Bunichev V, Dubinin M, Dudko L, Edneral V, Ilyin V, Kryukov A, Savrin V, Semenov A and Sherstnev A 2009 **CompHEP 4.5 Status Report**, *Preprint* arXiv:0901.4757 [hep-ph]
- [33] Boos E, Bunichev V, Dubinin M, Dudko L, Ilyin V, Kryukov A, Edneral V, Savrin V, Semenov A and Sherstnev A 2004 **CompHEP 4.4: Automatic computations from Lagrangians to events** *Nucl. Instrum. Meth. A* **534** 250 (*Preprint* hep-ph/0403113)
- [34] Boos E, Dubinin M, Ilyin V, Pukhov A and Savrin V, *CompHEP. Specialized package for automatic calculations of elementary particle decays and collisions* (Seoul:SNU Press) SNU CTP report 94-36/358, 1994 (*Preprint* hep-ph/9503280)
- [35] Pukhov A, Boos E, Dubinin M, Dudko L, Ilyin V, Kryukov A, Edneral V, Savrin V, Semenov A 1998 **CompHEP - a package for evaluation of Feynman diagrams and integration over multi-particle phase space. User's manual for version 3.3** (Moscow:Moscow State University Press) INP MSU report 98-41/542 (*Preprint* hep-ph/9908288)
see also <http://theory.sinp.msu.ru/comphep>
- [36] Abazov V et al. (DO Collaboration) 2011 Measurements of single top quark production cross sections and $|V_{tb}|$ in $p\bar{p}$ collisions at $\sqrt{s}=1.96$ TeV *Phys. Rev. D* **84** 112001
- [37] Chatrchyan S et al (CMS Collaboration) 2012 Measurement of the single-top-quark t-channel cross section in pp collisions at $\sqrt{s}=7$ TeV *JHEP* **1212** 035
- [38] Khachatryan V et al. (CMS Collaboration) 2014 Measurement of the t-channel single-top-quark production cross section and of the $|V_{tb}|$ CKM matrix element in pp collisions at $\sqrt{s}=8$ TeV *JHEP* **1406** 090
- [39] Boos E E, Bunichev V E, Dudko L V, Savrin V I and Sherstnev A V 2006 Method for simulating electroweak top-quark production events in the NLO approximation: SingleTop event generator, *Phys. Atom. Nucl.* **69** 1317
- [40] Boos E and Dudko L 2012 The single top quark physics *Int. J. Mod. Phys. A* **27** 1230026
- [41] Baskakov A, Boos E, Bunichev V, Dubinin M, Dudko L, Myagkov I, Perfilov M and Vorotnikov G 2016 New Physics search in the processes of the electroweak top quark production *EPJ Web Conf* **125** 02008
- [42] Chatrchyan S et al. (CMS Collaboration) 2012 Observation of a new boson at a mass of 125 GeV with the CMS experiment at the LHC *Phys. Lett. B* **716** 30 (*Preprint* arXiv:1207.7235[hep-ex]); 2015 *Eur. Phys. J. C* **75** 212 (*Preprint* arXiv:1412.8662[hep-ex])
- [43] Aad G et al. (ATLAS Collaboration) 2012 Observation of a new particle in the search for the SM Higgs boson with the ATLAS detector at the LHC *Phys. Lett. B* **716** 1 (*Preprint* arXiv:1207.7214[hep-ex]); 2015 *Phys. Rev. D* **90** 052004 (*Preprint* arXiv:1406.3827[hep-ex])
- [44] Gonzalez-Alonso M, Greljo A, Isidori G, Marzocca D 2015 Pseudo-observables in Higgs decays *Eur. Phys. J. C* **75** 128 (2015)
- [45] Passarino G, Sturm C and Uccirati S 2010 Higgs pseudo-observables, second Riemann sheet and all that *Nucl. Phys. B* **834** 77
- [46] Falkowski A and Riva F 2015 Model-independent precision constraints on dimension-6 operators *JHEP* **1502** 039
- [47] Aguilar-Saavedra J A 2008 Single top quark production at LHC with anomalous Wtb couplings *Nucl.Phys. B* **804** 160
- [48] Zhang C and Willenbrock S 2011 Effective-Field-Theory Approach to Top-Quark Production and Decay *Phys.Rev. D* **83** 034006
- [49] Contino R, Ghezzi M, Grojean C, Muhlleitner M and Spira M Effective Lagrangian for a light Higgs-like

- scalar 2013 *JHEP* **07** 035
- [50] Boos E, Bunichev V, Dubinin M and Kurihara Y 2014 Higgs boson signal at complete tree level in the SM extension by dimension-six operators *Phys. Rev. D* **89** 035001
 - [51] Boos E, Bunichev V, Dubinin M and Kurihara Y 2014 Expectations for probing the Higgs-fermion and the Higgs- vector boson couplings at the ILC *Phys. Lett. B* **739** 410
 - [52] Boos E, Bunichev V and Dubinin M 2013 Combined ts of the Higgs boson signal at the LHC and the ILC by means of CompHEP, *Proc. of 21st International Workshop on High Energy Physics and Quantum Field Theory* (PoS:QFTHEP 2013) 015
 - [53] Buchmuller W and Wyler D 1986 Effective Lagrangian Analysis of New Interactions and Flavor Conservation *Nucl.Phys. B* **268** 621
 - [54] Passarino G 2013 NLO Inspired Effective Lagrangians for Higgs Physics *Nucl. Phys. B* **868** 416
 - [55] CMS Collaboration 2015 CERN-PH-EP/2013-037; 2015/06/16; *Preprint* arXiv:1412.8662[hep-ph]
 - [56] Whisnant K, Yang J M, Young B L, Zhang X 1997 *Phys. Rev. D* **56** 467 (*Preprint* hep-ph/9702305)
 - [57] Dumont B, Fichet S, Gersdorff G von 2013 A Bayesian view of the Higgs sector with higher dimensional operators *JHEP* **1307** 065
 - [58] Espinosa J R, Grojean C, Muhlleitner M and Trott M 2012 *JHEP* **1212** 045; 2012 *JHEP* **1209** 126; 2012 *JHEP* **1205** 097
 - [59] Kraml S, Allanach B C, Mangano M, Prosper H B, Sekmen S, Balazs C, Barr A, Bechtle P, Belanger G, Belyaev A et al. 2012 Searches for New Physics: Les Houches Recommendations for the Presentation of LHC Results *Eur.Phys.J. C* **72** 1976
 - [60] Azatov A, Contino R, Galloway J 2012 Model-Independent Bounds on a Light Higgs *JHEP* **1204** 127; Erratum-ibid. 2013 **1304** 140
 - [61] Semenov A 2016 **LanHEP** A package for automatic generation of Feynman rules from the Lagrangian. Version 3.2 *Comput.Phys.Commun.* **201** 167
 - [62] Semenov A 1997 **LanHEP**: A package for automatic generation of Feynman rules from the Lagrangian *Comput.Phys.Commun.* **115** 124
 - [63] Akhmetzyanova E, Dolgoplov M and Dubinin M 2005 Higgs bosons in the two-doublet model with CP violation *Phys.Rev. D* **71** 075008
 - [64] Dubinin M and Semenov A 2003 Triple and quartic interactions of Higgs bosons in the two Higgs doublet model with CP violation *Eur.Phys.J. C* **28** 223
 - [65] Dubinin M and Semenov A 1998 Triple and quartic interactions of Higgs bosons in the general two Higgs doublet model SNUTP-98-140; *Preprint* hep-ph/9812246
 - [66] Akhmetzyanova E, Dolgoplov M and Dubinin M 2006 Violation of CP invariance in the two-doublet Higgs sector of the MSSM *Phys.Part.Nucl.* **37** 677
 - [67] Dubinin M and Petrova E 2016 Simplified parametric scenarios of the Minimal Supersymmetric Standard Model after the discovery of the Higgs boson *Phys.Atom.Nucl.* **79** 488
 - [68] Dubinin M and Petrova E 2016 Post-Higgs THDM scenarios associated with the new diphoton resonance data *EPJ Web Conf* **125** 02018
 - [69] Dubinin M and Petrova E 2017 Radiative corrections to Higgs boson masses for the MSSM Higgs potential with dimension-six operators *Phys. Rev. D* **95** 055021
 - [70] Boos E, Bunichev V, Dudko L and Perfilov M 2016 Modeling of anomalous Wtb interactions in single top quark events using subsidiary fields *Int. J. Mod. Phys. A* **32** 1750008
 - [71] CMS Collaboration 2014 *Search for anomalous Wtb couplings and top FCNC in t -channel single-top-quark events* (CERN:Geneva) CMS Physics Analysis Summary CMS-PAS-TOP-14-007
 - [72] Vermaseren J A M 1991 Symbolic Manipulation with **FORM** (Amsterdam:Computer Algebra Netherlands)
 - [73] Ruijl B, Ueda T and Vermaseren J 2017 **FORM** version 4.2 *Preprint* arXiv:1707.06453[hep-ph]